

A continuous light source. No dots visible !

- Pluggable segments available in sections of 100 or 50 mm. Diameter: 3 mm
- Fixture length available from 50mm up to 1000mm.
- Embedded current and temperature regulators
- Excellent light quality with high CRI; High efficiency.
- Dimmable by 24V PWM power supply
- Power: 3W/100mm segment
- Available CCTs : **1800K / 2200K / 2500K / 2700K / 3000K / 3500K / 4000K / 5000K / 6000K**

A considerable technological challenge having required years of research and 4 patent applications. This miniature continuous LED source was specially developed to get rid of any points.

This rod of only **5 mm diameter** having a flux of **3000 lm/m**, a **CRI of up to 96** makes it a genuinely unique product on the market.

The light distribution is truly homogeneous over its **180° angle** (can be restrained) and has no yellow fringes.

There are multiple opportunities and applications : jewelers, luxury retailers, shelves, display windows, museums, minimalist light fittings.

Different assembling accessories are available:

Brackets

Suspension



Addhesive



Front



Behind



Plug-in bases

Magnetic

for fixation and power
supply insulated or not.



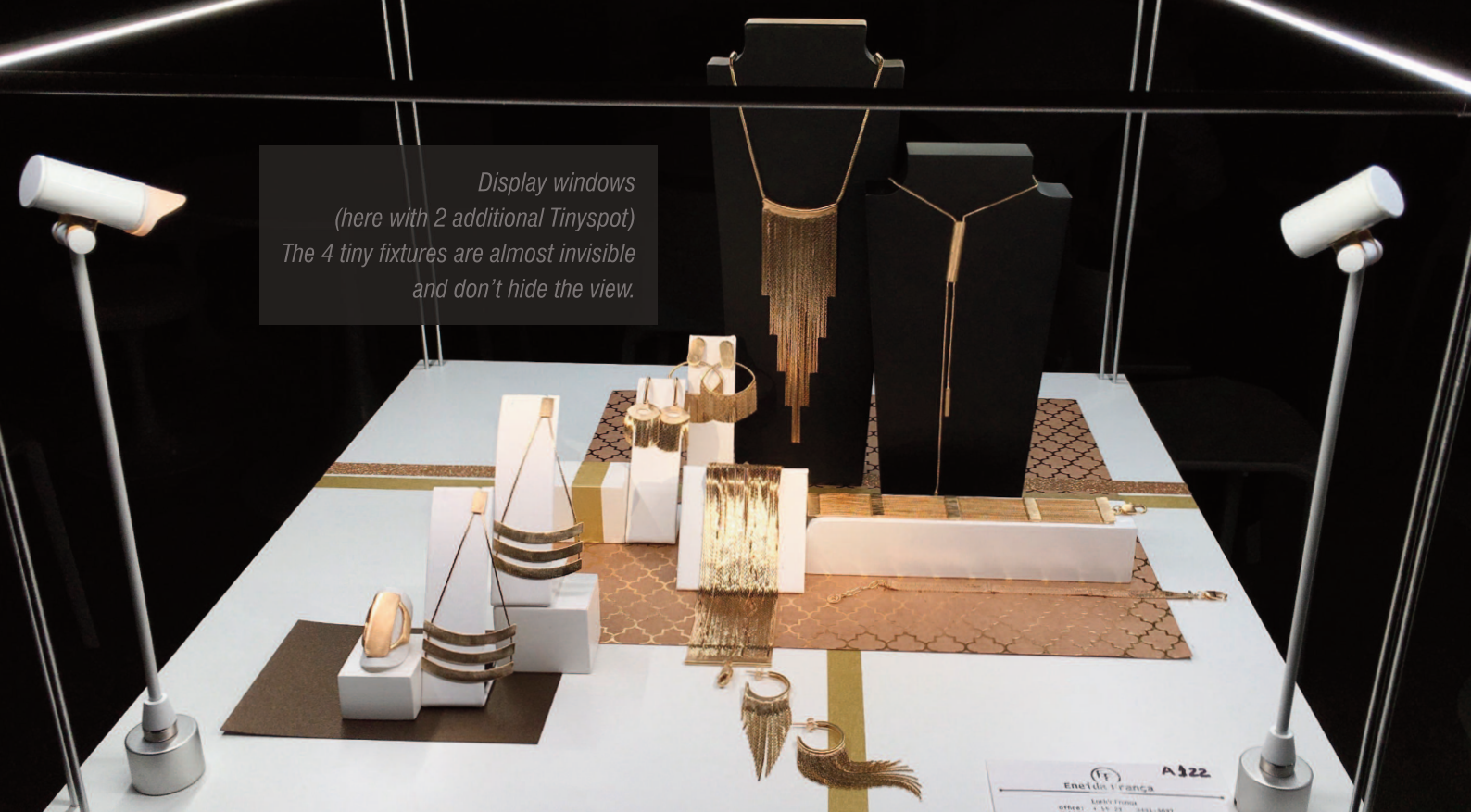
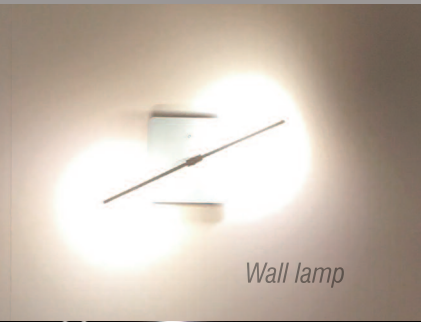
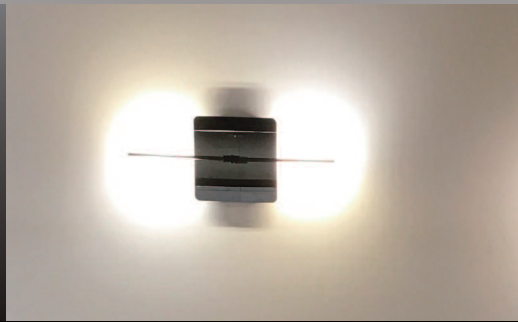
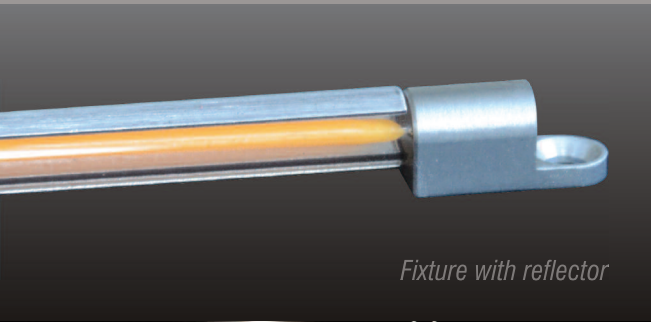
Front side of the
5mm diameter rod

Top view of fixture
with 6mm diameter
brushed aluminum
reflector

TinyLig



CCT Light	1800K	2200K	2500K	2700K	3000K	3500K	4000K	5000K	6000K
CRI	91	93	92	92	96	95	94	93	92
Flux (lm/M)	1800	2000	2200	2300	2400	2700	2850	2950	3000



Website : www.led-ner.com

E-mail : contact@led-ner.com

Phone. : + 33 4 42 70 02 07

Address :
15 Avenue Gay-Lussac
13470 Carnoux en Provence FRANCE